

TECHNICAL MANUAL

**DIRECT SUPPORT AND GENERAL SUPPORT MAINTENANCE
REPAIR PARTS AND SPECIAL TOOLS LISTS
(INCLUDING DEPOT MAINTENANCE
REPAIR PARTS AND SPECIAL TOOLS)
FOR**

**RADIOSONDE BASELINE CHECK SETS
AN/GMM-1 AND AN/GMM-1A
(NSN 6660-00-527-8392)**

TECHNICAL MANUAL }
 No. 11-6660-219-34P }

HEADQUARTERS
 DEPARTMENT OF THE ARMY
 WASHINGTON, DC, 13 October 1978

**DIRECT SUPPORT AND GENERAL SUPPORT MAINTENANCE
 REPAIR PARTS AND SPECIAL TOOLS LISTS
 (INCLUDING DEPOT MAINTENANCE REPAIR PARTS AND SPECIAL TOOLS)
 FOR
 RADIOSONDE BASELINE CHECK SETS
 AN/GMM-1 AND AN/GMM-1A
 (NSN 6660-00-527-8392)**

Current as of 20 June 1978

REPORTING OF ERRORS

You can improve this manual by recommending improvements using DA Form 2028-2 located in the back of the manual. Simply tear out the self addressed form, fill it out as shown on the sample, fold it where shown, and drop it in the mail.

If there are no blank DA Forms 2028-2 in the back of your manual, use the standard DA Form 2028 (Recommended Changes to Publications and Blank Forms) and forward to the Commander, US Army Communications and Electronics Materiel Readiness Command, ATTN: DRSEL-ME-MQ, Fort Monmouth, NJ 07703.

In either case a reply will be furnished direct to you.

Table of Contents

		Page	Illus Figure
SECTION	I. Introduction	1	
	II. Repair parts list	5	
Group	00 Radiosonde Baseline Check Sets AN/GMM-1 and AN/GMM-1A	5	1,2
	01 Cable assembly, power	9	3
	02 Cable assembly, power remote	9	3
	03 Chamber, temperature-humidity	11	4
	04 Control, power supply	13	5-7
	05 Psychrometer assembly	19	8
	06 Test Set, Radiosonde TS-1348/GMM-1A	21	9-11
	07 Cable Assembly CX-10470/GMM-1A	27	12
	08 Cable Assembly CX-10469/U (AN/GMM-1A)	29	13
SECTION	III. Special tools list (Not applicable)		
	IV. National stock number and part number index		30

*This manual supersedes TM 11-6660-219-34P, 6 September 1976.

SECTION I INTRODUCTION

1. Scope

This manual lists repair parts and special tools required for performance of direct support and general support maintenance of the AN/GMM-1 and AN/GMM-1A.

2. General

This Repair Parts and Special Tools List is divided into the following sections:

a. Section II. Repair Parts List. A list of repair parts authorized for use in the performance of maintenance. The list also includes parts which must be removed for replacement of the authorized parts. Parts lists are composed of functional groups in ascending numerical sequence, with the parts in each group listed in figure and item number sequence.

b. Section III. Special Tools List. Not applicable.

c. Section IV. National Stock Number and Part Number Index. A list, in ascending National item identification number (NIIN, last 9 digits) sequence, of all National stock numbers appearing in the listings, followed by a list, in alphameric sequence, of all part numbers appearing in the listings. National stock number and part numbers are cross-referenced to each illustration figure and item number appearance.

3. Explanation of Columns

The following provides an explanation of columns found in the tabular listings:

a. Illustration. This column is divided as follows:

(1) *Figure number.* Indicates the figure number of the illustration in which the item is shown.

(2) *Item number.* The number used to identify each item called out in the illustration.

b. Source, Maintenance, and Recoverability Codes (SMR).

(1) *Source code.* Source codes are assigned to support items to indicate the manner of acquiring support items for maintenance, repair, or overhaul of end items. Source codes are entered in the first and second positions of the Uniform SMR Code format as follows:

<i>Code</i>	<i>Definition</i>
PA-	Item procured and stocked for anticipated or known usage.
XD-A	support item that is not stocked. When required, item will be procured through normal supply channels.

NOTE

Cannibalization or salvage maybe used as a source of supply for any items source coded above except those coded XA, XD, and aircraft support items as restricted by AR 700-42.

(2) *Maintenance code.* Maintenance codes are assigned to indicate the levels of maintenance authorized to USE and REPAIR support items. The maintenance codes are entered in the third and fourth positions of the Uniform SMR Code format as follows:

(a) The maintenance code entered in the third position will indicate the lowest maintenance level authorized to remove, replace, and use the support item. The maintenance code entered in the third position will indicate one of the following levels of maintenance:

<i>Code</i>	<i>Application/Explanation</i>
O-	Support item is removed, replaced, used at the organizational level.
F-	Support item is removed, replaced, used at the direct support level.
H-	Support item is removed, replaced, used at the general support level.

(b) The maintenance code entered in the fourth position indicates whether the item is to be repaired and identifies the lowest maintenance level with the capability to perform complete repair (i.e., all authorized maintenance functions). This position will contain one of the following maintenance codes:

<i>Code</i>	<i>Application/Explanation</i>
O-	The lowest maintenance level capable of complete repair of the support item is the organizational level.
F-	The lowest maintenance level capable of complete repair of the support item is the direct support level.
H-	The lowest maintenance level capable of complete repair of the support item is the general support level.

Z-Nonreparable. No repair is authorized,

(3) *Recoverability code.* Recoverability codes are assigned to support items to indicate the disposition action on unserviceable items. The recoverability code is entered in the fifth position of the Uniform SMR Code format as follows:

Recoverability codes

Definition

Z-Nonreparable item. When unserviceable, condemn and dispose at the level indicated in position 3.

F-Reparable item. When uneconomically reparable, condemn and dispose at the direct support level.

H-Reparable item. When uneconomically reparable, condemn and dispose at the general support level.

A-Item requires special handling or condemnation procedures because of specific reasons (i.e., precious metal content, high dollar value, critical material or hazardous material). Refer to appropriate manuals/directives for specific instructions.

c. National Stock Number. Indicates the National stock number assigned to the item and will be used for requisitioning purposes.

d. Part Number. Indicates the primary number used by the manufacturer (individual, company, firm, corporation, or Government activity), which controls the design and characteristics of the item by means of its engineering drawings, specifications standards, and inspection requirements, to identify an item or range of items.

NOTE

When a stock numbered item is requisitioned, the repair part received may have a different part number than the part being replaced.

e. Federal Supply Code for Manufacturer (FSCM). The FSCM is a 5-digit numeric code listed in SB 708-42 which is used to identify the manufacturer, distributor, or Government agency, etc.

f. Description. Indicates the Federal item name and, if required, a minimum description to identify the item.

g. Unit of Measure (U/M). Indicates the standard of the basic quantity of the listed item as used in performing the actual maintenance function. This measure is expressed by a two-character alphabetical abbreviation (e.g., ea, in, pr, etc.). When the unit of measure differs from the unit of issue, the lowest unit of issue that will satisfy the required units of measure will be requisitioned.

h. Quantity Incorporated in Unit. Indicates the quantity of the item used in the breakout shown on the

illustration figure, which is prepared for a functional group, subfunctional group, or an assembly.

4. Special Information

a. Usable on codes shown in the description column. Uncoded items are applicable to all models. Identification of the usable on codes used in this publication are:

<i>Code</i>	<i>Used on</i>
4AA	AN/GMM-1
2IP	AN/GMM-1A

b. The following publications pertain to the AN/GMM-1 and AN/GMM-1A and its components:

TM 11-6660-219-12, Radiosonde Baseline Check Sets AN/GMM-1 and AN/GMM-1A

TM 11-6660-219-20P, Radiosonde Baseline Check Sets AN/GMM-1 and AN/GMM-1A

TM 11-6660-219-34, Radiosonde Baseline Check Sets AN/GMM-1 and AN/GMM-1A with Radiosonde Test Set TS-1348/GMM-1A

5. How to locate Repair Parts

a. When National stock number or part number is unknown.

(1) *First.* Using the table of contents, determine the functional group within which the repair part belongs. This is necessary since illustrations are prepared for functional groups and listings are divided into the same groups.

(2) *Second.* Find the illustration covering the functional group to which the repair part belongs.

(3) *Third.* Identify the repair part on the illustration and note the illustration figure and item number of the repair part.

(4) *Fourth.* Using the Repair Parts Listing, find the figure and item number noted on the illustration.

b. When National stock number or part number is known.

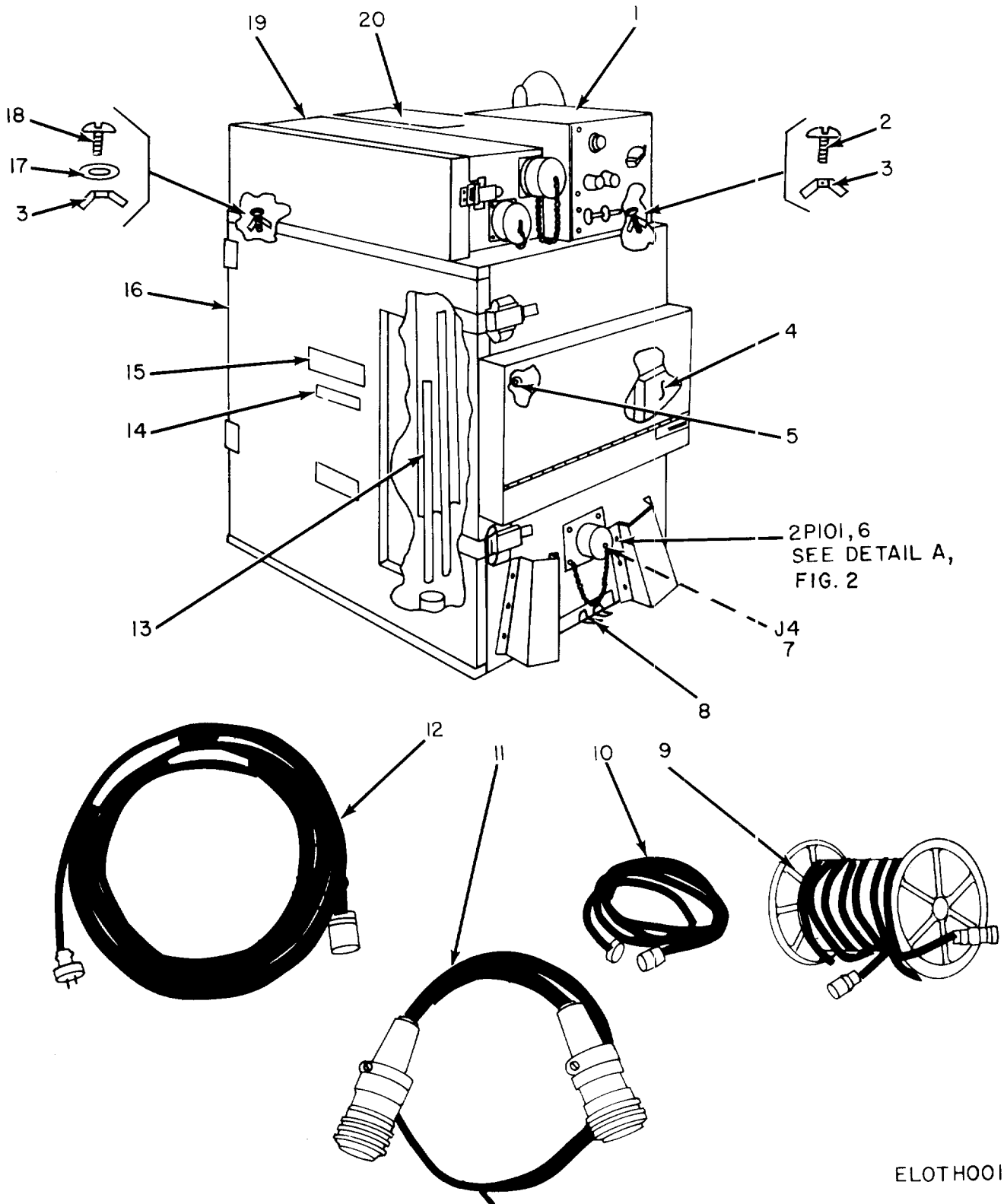
(1) *First.* Using the Index of National Stock Numbers and Part Numbers, find the pertinent National stock number or part number. This index is in ascending NIIN sequence followed by a list of part numbers in ascending alphameric sequence, cross-referenced to the illustration figure number and item number.

(2) *Second.* After finding number, locate the figure and repair parts list.

6. Abbreviations

Not applicable.

(Next printed page is 4)



ELOTHOOI

Figure 1. Radiosonde Baseline Check Sets AN/GMM-1 and AN/GMM-1A.

SECTION II

(1) ILLUSTRATION (A) FIG NO	(2) (B) ITEM NO	(3) SMR CODE	(4) NATIONAL STOCK NUMBER	(5) PART NUMBER	(6) DESCRIPTION FSCM	(7) USABLE ON CODE	(8) QTY INC IN UNIT U/M UNIT
GROUP 00 RADIOSONDE BASELINE CHECK SETS							
AN/GMM-1 AND AN/GMM-1A							
1	1	XDOFF		SCD21343	80063 CONTROL UNIT, POWER SUPPLY		EA 1
1	2	PAFZZ	5305-00-913-7334	SEELSKREWS1032X7-8	97539 SCREW, SEEL		EA 4
1	3	PAFZZ	5310-00-208-2794	SS58310	61864 NUT, TEE		EA 8
1	4	PAOZZ	7610-00-408-4818	235	82187 BOOK, REFERENCE		EA 1
1	5	XDFZZ		2558	70485 GROMMET, RUBBER		EA 1
1	6	PAFZZ	6625-00-937-6794	SMC444368	80063 CONNECTOR ASSEMBLY		EA 1
1	7	PAFZZ	5935-00-642-4039	7510	59519 CONNECTOR, PLUG, ELECTRICAL		EA 1
1	8	PAFZZ	5340-00-222-8562	CPC4	05690 CLIP, CABLE		EA 4
1	9	XDHHH	5995-00-356-0202	SCD21356	80063 CABLE ASSEMBLY, POWER REMOTE		EA 1
1	10	XDHHH	6660-00-265-6329	SCB21403	80063 CABLE ASSEMBLY, POWER		EA 1
1	11	XDHHH		CX10470GMM1	80058 CABLE ASSEMBLY		EA 1
1	12	XDHHH		CX10469U	80058 CABLE ASSEMBLY		EA 1
1	13	PAOOA	6660-00-223-5084	ML224	81349 PSYCHROMETER		EA 1
1	14	XDFZZ		SCC76527-5	80063 LABEL, MARKED		EA 1
1	15	XDFZZ		SMB444386	80063 PLATE, IDENTIFICATION		EA 1
1	16	PAOFF	6660-00-527-8392	ANGMM1A	80058 CHAMBER, TEMPERATURE-HUMIDITY		EA 1
1	17	PAFZZ	5310-00-933-7972	SCB93722	80063 WASHER, FLAT		EA 4
1	18	XDFZZ		6X5-8	45722 SCREW		EA 4
1	19	XDOFF		TS1348GMM1A	80058 RADIOSONDE TEST SET		EA 1
1	20	XDFFF		32148-PH-51	80063 CABINET ASSEMBLY		EA 1

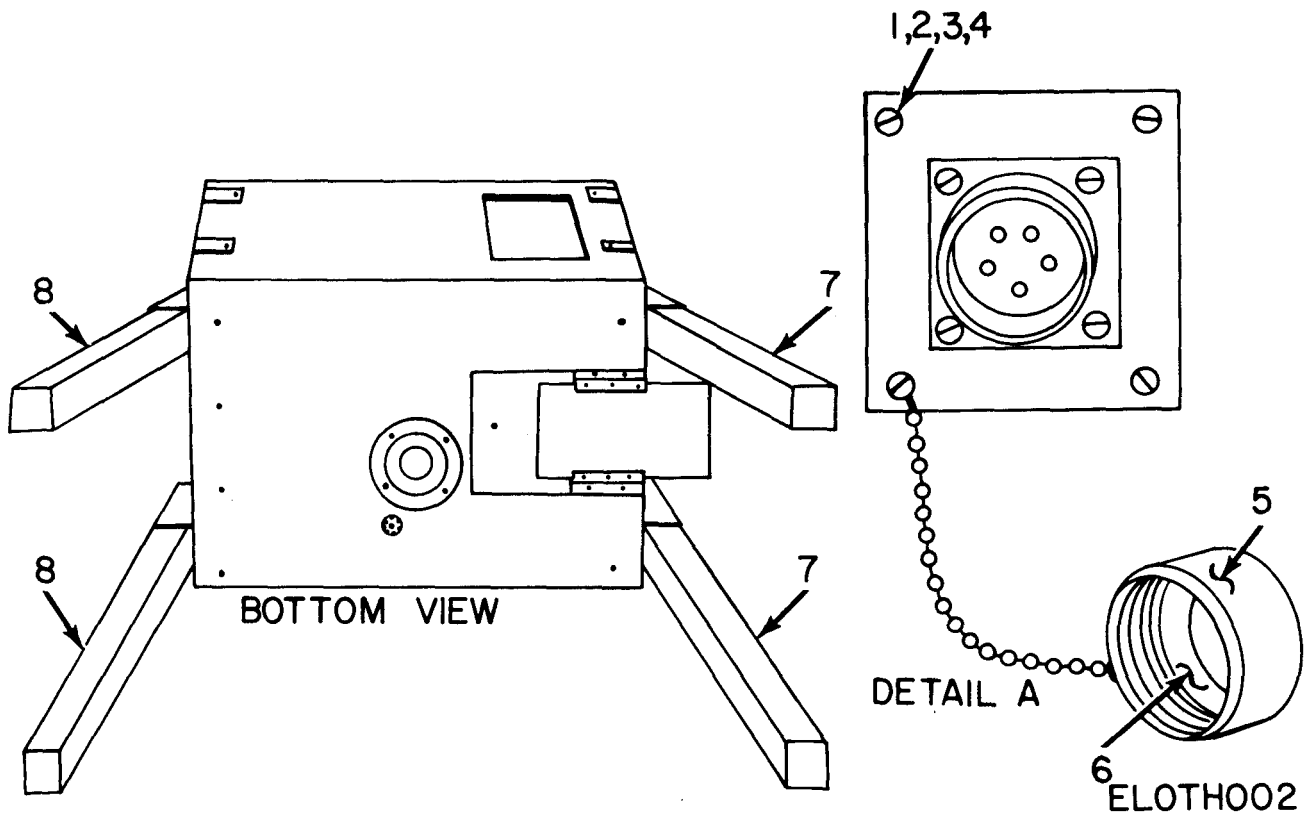


Figure 2. Radiosonde Baseline Check Sets AN/GMM-1 and AN/GMM-1A, Bottom View.

SECTION II

(1) ILLUSTRATION (A) FIG NO	(2) (B) ITEM NO	(3) SMR CODE	(4) NATIONAL STOCK NUMBER	(5) PART NUMBER	(6) FSCM	(7) DESCRIPTION USABLE ON CODE	(8) QTY INC IN UNIT
2	1	PAFZZ	5305-00-043-6509	MS35221-35	96906	SCREW, MACHINE	EA 4
2	2	PAFZZ	5310-00-045-4007	MS35338-41	96906	WASHER, LOCK	EA 4
2	3	PAFZZ	5310-00-082-1404	MS27183-6	96906	WASHER, FLAT	EA 4
2	4	PAFZZ	5310-00-934-9747	MS35649-262	96906	NUT, HEXAGON	EA 4
2	5	PAOZZ	5935-00-578-2742	MS25043-24C	96906	CAP AND CHAIN	EA 1
2	6	PAFZZ	5330-00-432-4734	10-40450-24	77820	GASKET	EA 1
2	7	PAFZZ	6660-00-356-5150	SCB21275	80063	POST, SUPPORTING	EA 2
2	8	PAFZZ	6660-00-356-5151	SCB21276	80063	POST, SUPPORTING	EA 2

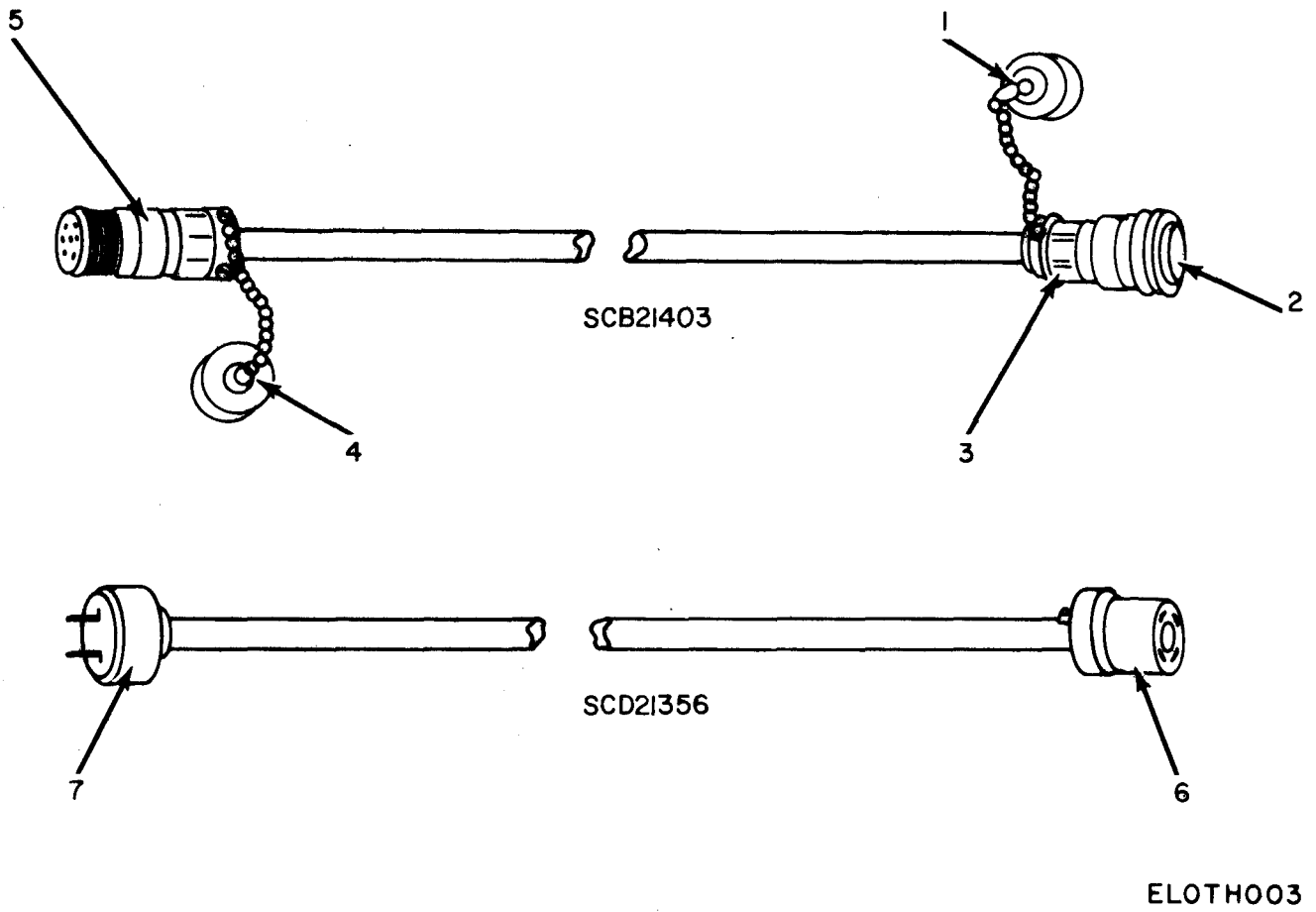


Figure 3. Cable Assemblies, Power.

SECTION II

(1) ILLUSTRATION (A) FIG NO	(2) (B) ITEM NO	(3) SMR CODE	(4) NATIONAL STOCK PART NUMBER	(5) FSCM NUMBER	(6) DESCRIPTION	(7) USABLE ON CODE	(8) QTY INC IN U/M UNIT
GROUP 01 CABLE ASSEMBLY, POWER							
3	1	PAHZZ	5935-00-246-4447	9760-18P	02660 COVER,ELECTRICAL CONNECTOR		EA 1
3	2	XDHZZ	5935-00-280-2822	MS3106A18-8P	81349 CONNECTOR,RECEPTACLE,ELECTRICAL		EA 1
3	3	PAHZZ	5935-00-809-0786	MS3057-10A	96906 CLAMP,ELECTRICAL		EA 2
3	4	PAHZZ	5935-00-500-5008	MS25043-18D	96906 COVER,ELECTRICAL		EA 1
3	5	PAHZZ	5935-00-835-0962	MS3101E18-8S	81349 CONNECTOR,PLUG,ELECTRICAL		EA 1
GROUP 02 CABLE ASSEMBLY, POWER REMOTE							
3	6	PAHZZ	5935-00-295-5351	7506	74545 CONNECTOR,PLUG,ELECTRICAL		EA 1
3	7	PAHZZ	5935-00-149-4013	7505	74545 CONNECTOR,PLUG,ELECTRICAL		EA 1

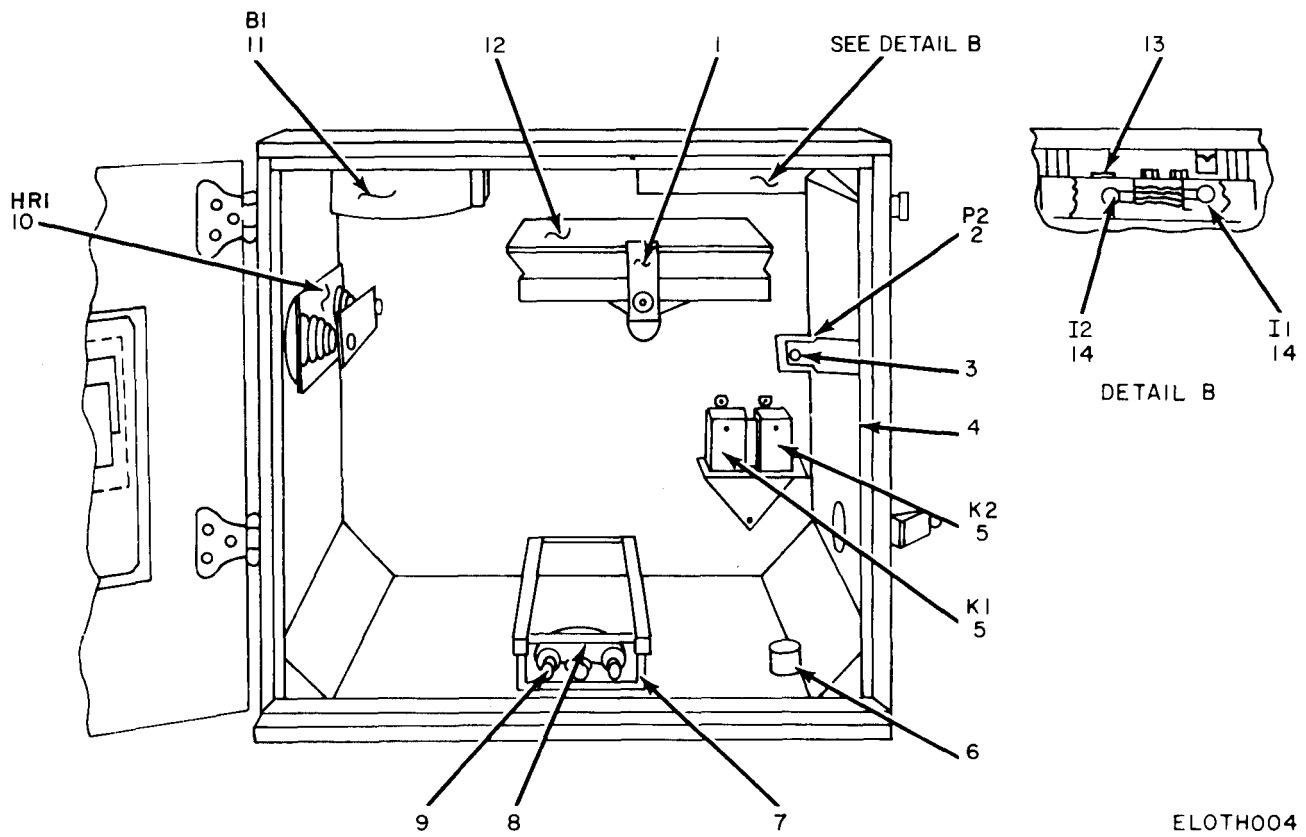
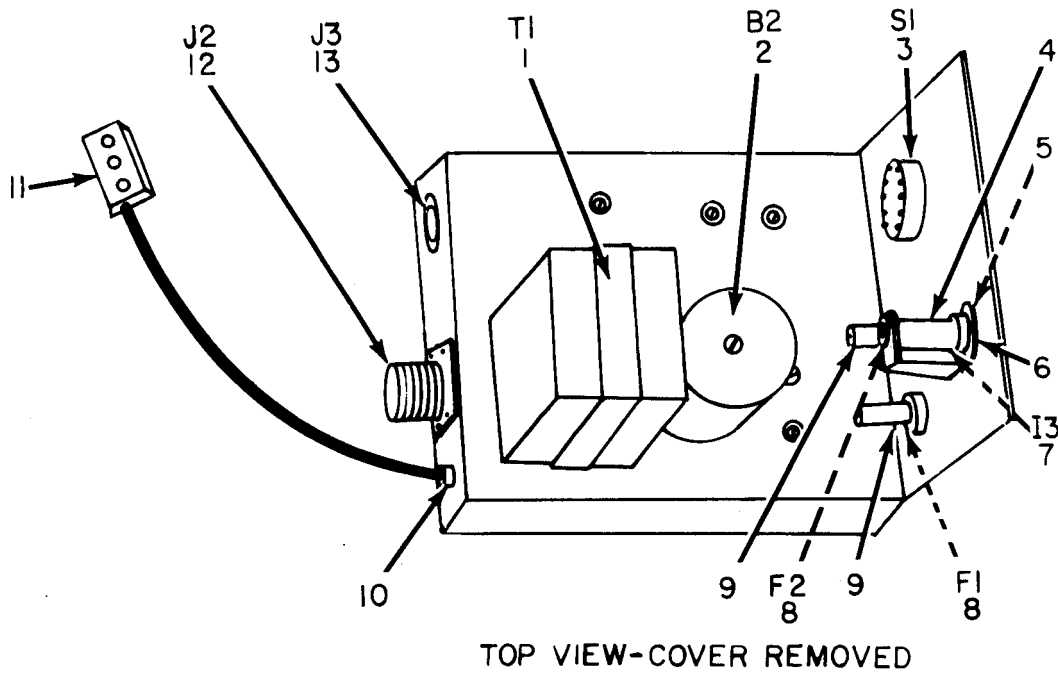


Figure 4. Chamber, Temperature-Humidity.

SECTION II

(1) ILLUSTRATION (A) FIG NO	(2) (B) ITEM NO	(3) SMR CODE	(4) NATIONAL STOCK NUMBER	(5) PART NUMBER	(6) FSCM	(6) DESCRIPTION	(7) USABLE ON CODE	(8) QTY INC IN U/M UNIT
GROUP 03 CHAMBER, TEMPERATURE-HUMIDITY								
4	1	PAFZZ	6660-00-356-4908	SCB21310	80063	STRAP,RETAINING	EA	1
4	2	PAFZZ	5935-00-201-8191	7445	72825	CONNECTOR,RECEPTACLE,ELECTRICAL	EA	1
4	3	XDFZZ		SCB21281	80063	NUT,SELF LOCKING,KNURLED	EA	1
4	4	XDFZZ		SCD21277-3	80063	GASKET,DOOR	EA	1
4	5	PAFZZ	5945-00-257-8748	A7754-1	51915	RELAY,ARMATURE	EA	2
4	6	PAOZZ	6685-00-309-5693	SCB21274	80063	CUP	EA	1
4	7	XDFZZ		SCB87974	80063	BINDING POST ASSEMBLY	EA	1
4	8	PAFZZ		SCB21284	80063	GASKET,APERTURE	EA	1
4	9	PAFZZ	5940-00-283-5386	SCC16495	80063	POST,BINDING	EA	3
4	10	XDFZZ		2A44	99971	RESISTANCE ELEMENT	EA	1
4	11	PAFZZ	4140-00-269-7933	SCB21277-16	80063	FAN,CENTRIFUGAL	EA	1
4	12	PAFZZ	6740-00-291-5834	RR-T-646	81349	TRAY,PROCESSING,PHOTOGRAPHIC	EA	1
4	13	PAFZZ	5325-00-174-5317	AN931-3-5	88044	GROMMET,RUBBER	EA	1
4	14	PAOZZ	6240-00-155-7949	LM27	80063	LAMP	EA	2

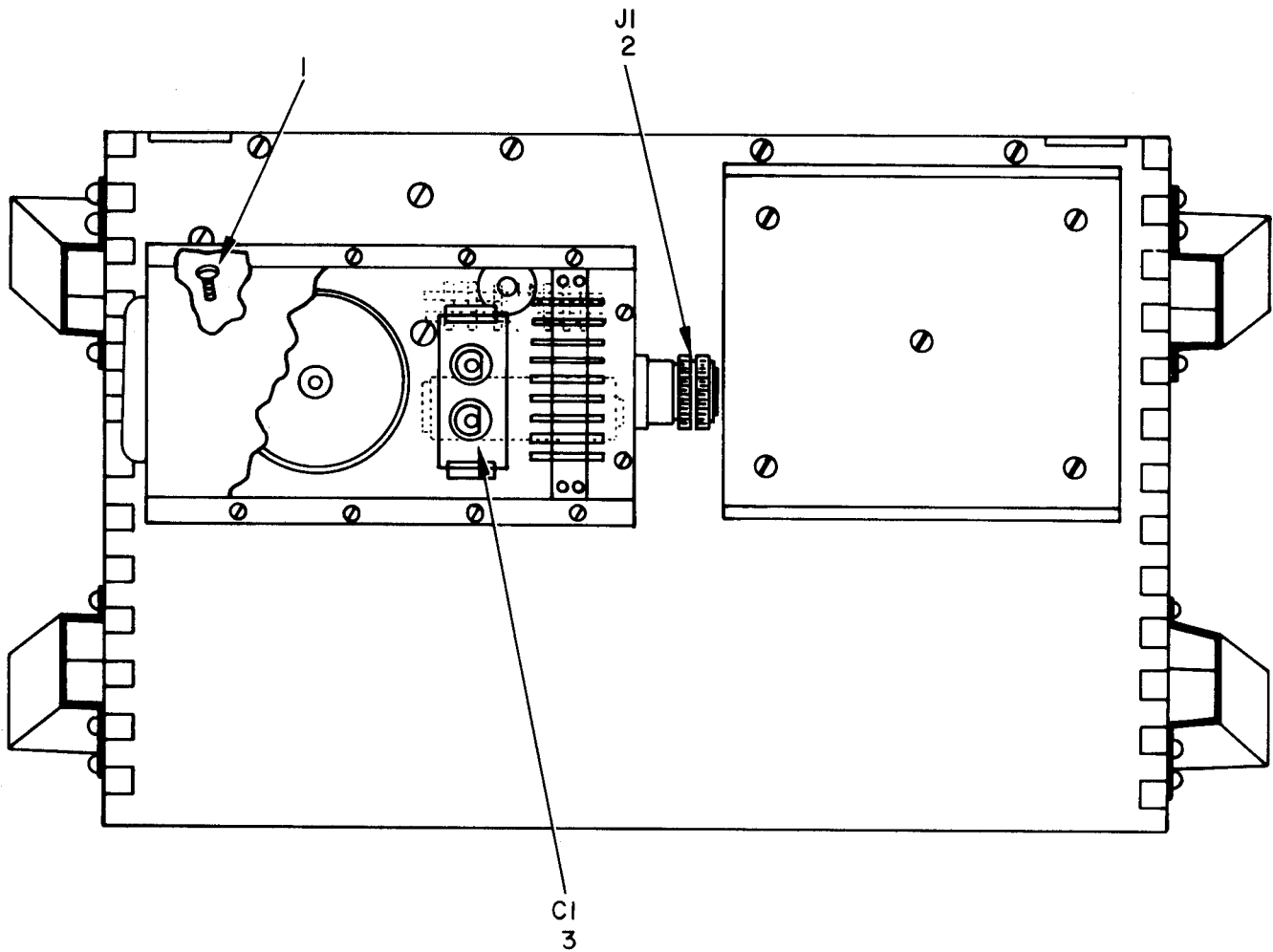


ELOTH005

Figure 5. Control, Power Supply, Top View.

SECTION II

(1) ILLUSTRATION (A) FIG NO	(2) (B) ITEM NO	(3) SMR CODE	(4) NATIONAL STOCK PART NUMBER	(5) FSCM	(6) DESCRIPTION	(7) USABLE ON CODE	(8) QTY INC IN UNIT
GROUP 04 CONTROL, POWER SUPPLY							
5	1	PAFZZ	5950-00-295-7545	MEC10092	74082 TRANSFORMER, POWER, STEP DOWN	EA	1
5	2	XDFZZ		SCD21343-8	80063 MOTOR, ALTERNATING CURRENT	EA	1
5	3	PAFZZ	5930-00-669-9958	173C	37942 SWITCH, ROTARY	EA	1
5	4	PAFZZ	6250-00-283-9741	706	72619 LAMPHOLDER	EA	1
5	5	PAOZZ	6210-00-228-6027	25CSP	72765 LENS, INDICATOR LIGHT	EA	1
5	6	PAFZZ	6210-00-186-9042	810B432	72619 LIGHT, INDICATOR	EA	1
5	7	PAOZZ	6240-00-155-7949	LM27	80063 LAMP	EA	1
5	8	PAOZZ	5920-00-474-5743	FO2G3ROOA	81349 FUSE, CARTRIDGE	EA	2
5	9	PAFZZ	5920-00-280-4156	HKPHBL	71400 FUSEHOLDER	EA	2
5	10	PAFZZ	5325-00-263-6632	AN931-4-7	88044 GROMMET, RUBBER	EA	2
5	11	PAFZZ	6660-00-936-5437	SMC136996	80063 BINDING POST ASSEMBLY	EA	1
5	12	PAFZZ	5935-00-577-0281	MS3102E18-8SC	96906 CONNECTOR, RECEPTACLE, ELECTRICAL	EA	1
5	13	PAFZZ	5935-00-149-3089	7523	74545 CONNECTOR, RECEPTACLE, ELECTRICAL	EA	1

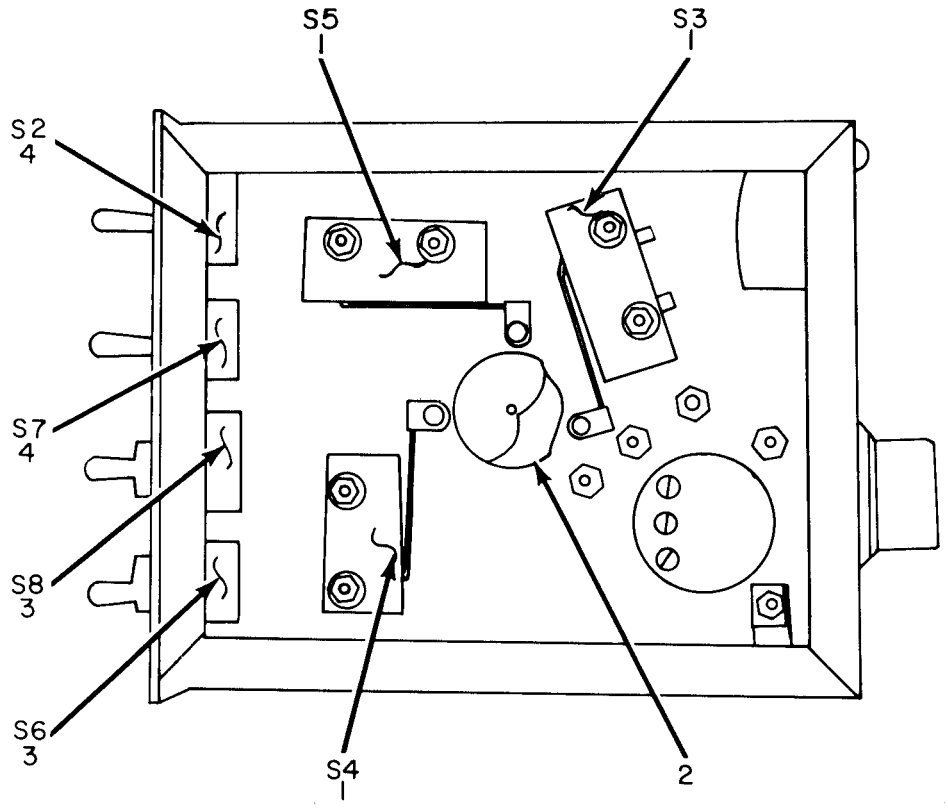


ELOTH006

Figure 6. Control, Power Supply, Interior View.

SECTION II

(1)	(2)	(3)	(4)	(5)	(6)	(7)	(8)
ILLUSTRATION		NATIONAL STOCK NUMBER		PART NUMBER	DESCRIPTION	USABLE ON CODE	QTY INC IN UNIT
FIG NO	(B) ITEM NO	SMR CODE	NUMBER	NUMBER	FSCM		U/M UNIT
6	1	PAFZZ	5305-00-702-7578	SEELSCREWR10-32X5-8	97539	SCREW,SEEL	EA 4
6	2	PAFZZ	5935-00-257-8680	97-5105A-18-8P	02660	CONNECTOR,RECEPTACLE,ELECTRICAL	EA 1
6	3	PAFZZ	5910-00-880-0380	CP72B1EF405K1	81349	CAPACITOR,FIXED,PAPER DIELECTRIC	EA 1



BOTTOM SIDE VIEW

ELOTH007

Figure 7. Control, Power Supply, Bottom Side View.

SECTION II

(1)	(2)	(3)	(4)	(5)	(6)	(7)	(8)
ILLUSTRATION		NATIONAL			DESCRIPTION		QTY
(A)	(B)	STOCK	PART				INC
FIG	ITEM	SMR	NUMBER	FSCM	USABLE ON CODE	U/M	IN
NO	NO	CODE	NUMBER				UNIT
7	1	PAFZZ	5930-00-224-5559	SCC176461	80063 SWITCH, SENSITIVE 4AA	EA	2
7	1	PAFZZ	5930-00-224-5559	SCC176461	80063 SWITCH, SENSITIVE 2IP	EA	3
7	2	PAFZZ	6660-00-355-8769	SCB21352	80063 CAM	EA	1
7	3	PAFZZ	5930-00-655-1575	MS35059-22	96906 SWITCH, TOGGLE	EA	2
7	4	PAFZZ	5930-00-655-1514	MS35058-22	96906 SWITCH, TOGGLE	EA	2

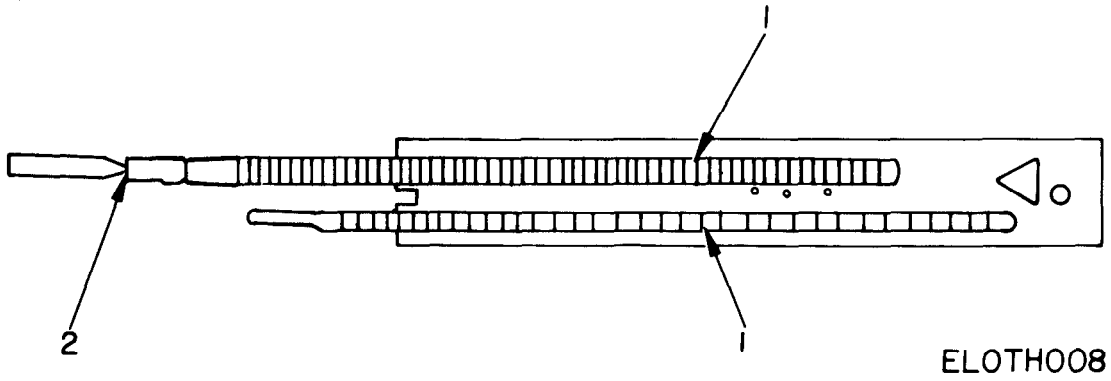


Figure 8. Psychrometer Assembly.

SECTION II

(1)	(2)	(3)	(4)	(5)	(6)	(7)	(8)
ILLUSTRATION		NATIONAL			DESCRIPTION		QTY
(A)	(B)	STOCK	PART				INC
FIG	ITEM	SMR	NUMBER	FSCM		USABLE ON CODE	U/M
NO	NO	CODE	NUMBER				UNIT
GROUP 05 PSYCHROMETER ASSEMBLY							
8	1	XDOZA	SCDL20624	80063	THERMOMETER, SELF INDICATING, LIQUID IN GLASS		EA 2
8	2	PAOZZ	9390-00-264-6158	109	74393 WICK		EA 1

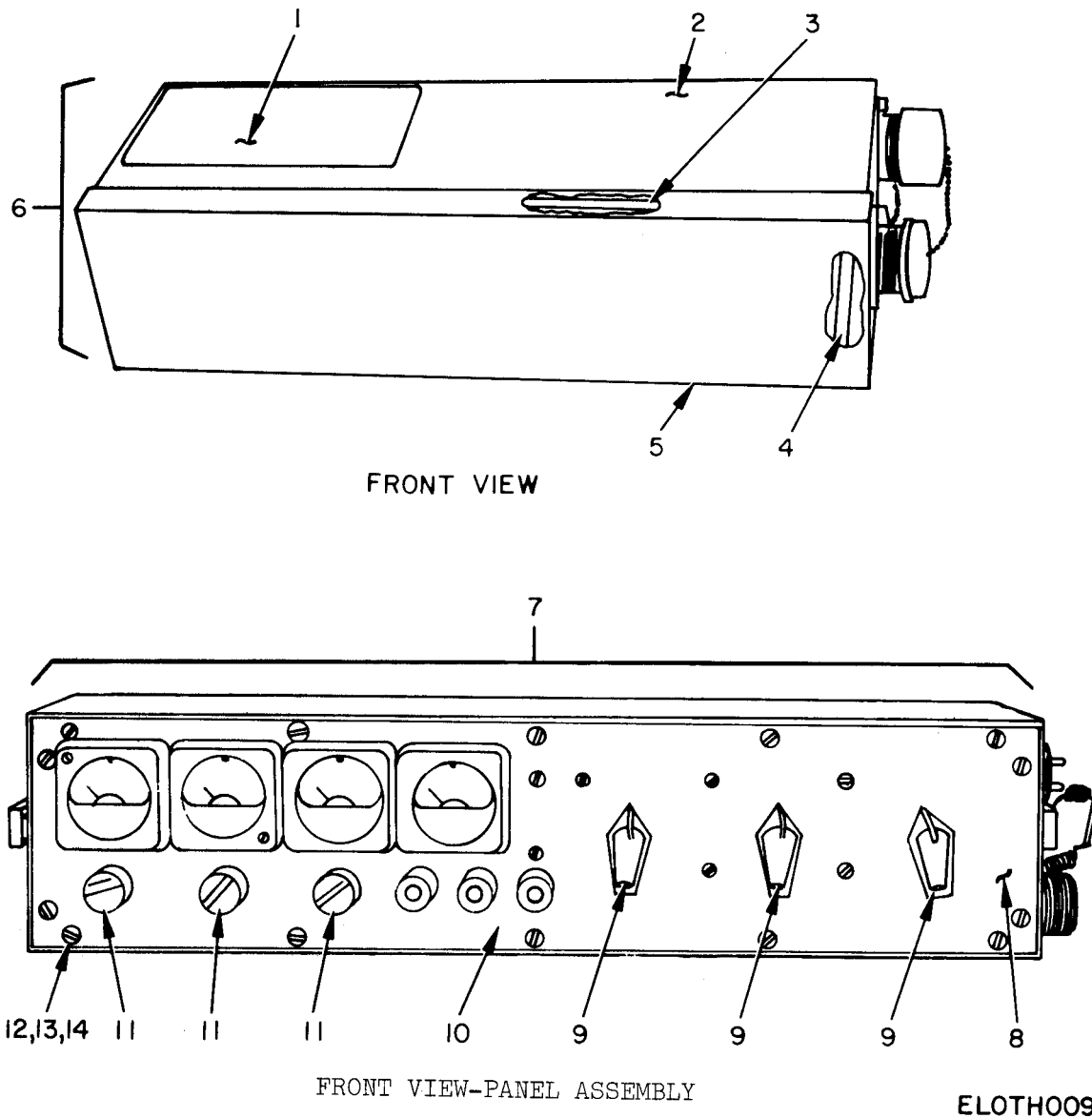


Figure 9. Test Set, Radiosonde TS-1348/GMM-1A.

SECTION II

(1) ILLUSTRATION (A) FIG NO	(2) (B) ITEM NO	(3) SMR CODE	(4) NATIONAL STOCK PART NUMBER	(5) (6) FSCM	DESCRIPTION	(7) USABLE ON CODE	(8) QTY INC IN UNIT
GROUP 06 TEST SET, RADIOSONDE TS-1348/GMM-1A							
9	1	XDOZZ	SMC444380	80063	SHEET, INSTRUCTION	EA	1
9	2	XDOFF	SMD444353-1	80063	CASE	EA	1
9	3	XDFZZ	SMC444355-1	80063	SEAL, RUBBER STRIP	EA	2
9	4	XDFZZ	SMC444355-2	80063	SEAL, RUBBER STRIP	EA	2
9	5	PAFZZ	6625-00-971-6213	SMC444355	COVER ASSEMBLY	EA	1
9	6	XDOFF	SMD444351	80063	CASE AND COVER ASSEMBLY	EA	1
9	7	XDOFF	SMD444353	80063	CASE ASSEMBLY	EA	1
9	8	XDOZZ	SMC444360	80063	PANEL	EA	1
9	9	PAOZZ	5355-00-160-5910	MS90120-2B01	96906 KNOB	EA	3
9	10	XDFFF	SMC444352	80063	PANEL ASSEMBLY	EA	1
9	11	PAOZZ	5355-00-556-0151	MS91528-1D2B	96906 KNOB	EA	3
9	12	XDFZZ	MS35223-19	96906	SCREW	EA	16
9	13	PAFZZ	5310-00-543-2410	MS35338-40	96906 WASHER, LOCK	EA	16
9	14	PAFZZ	5310-00-934-9739	MS35649-42	96906 NUT, HEXAGON	EA	16

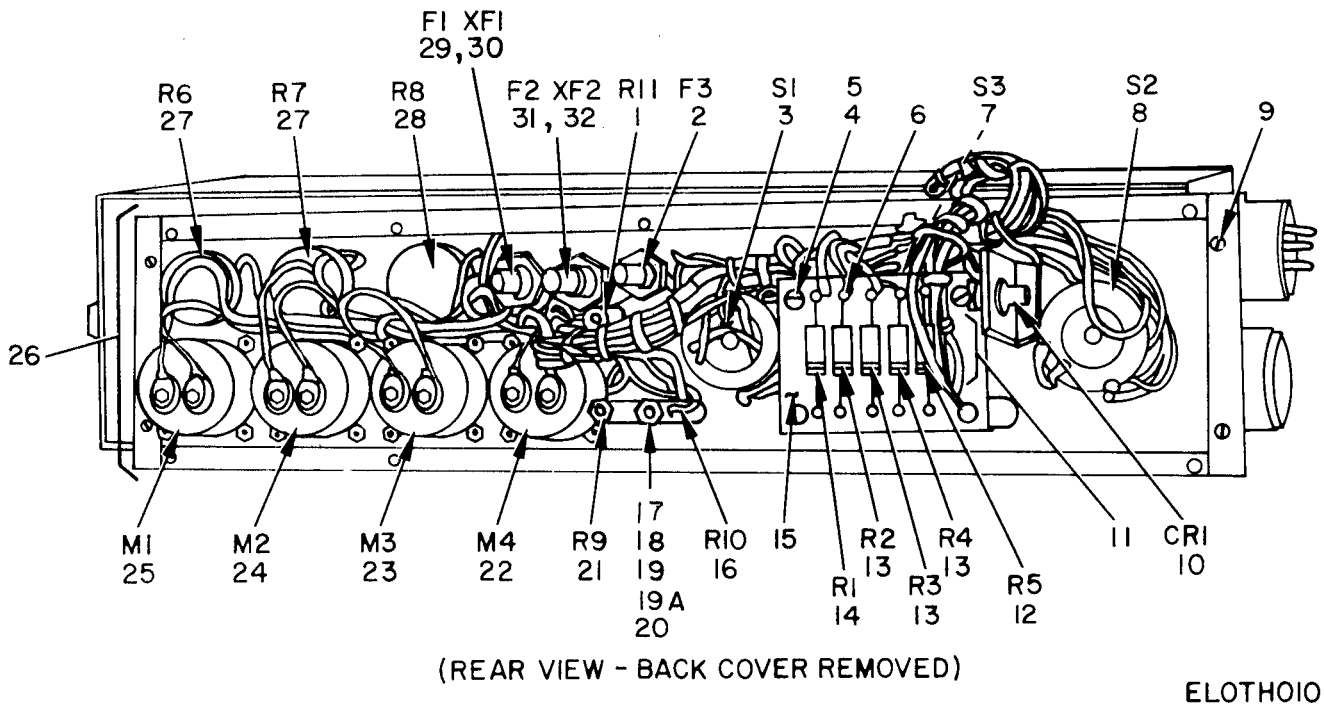
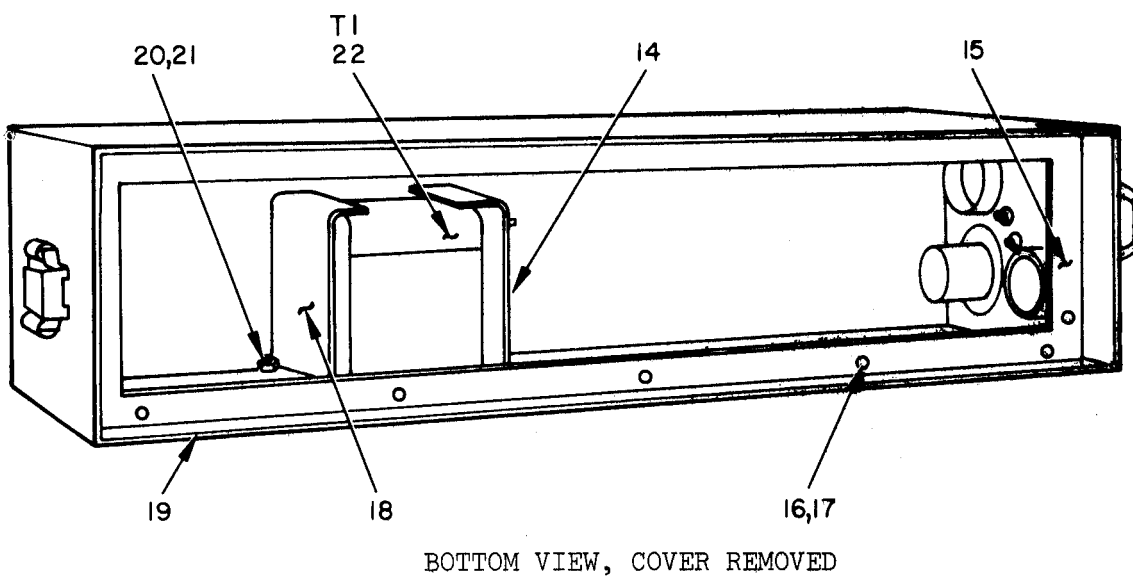
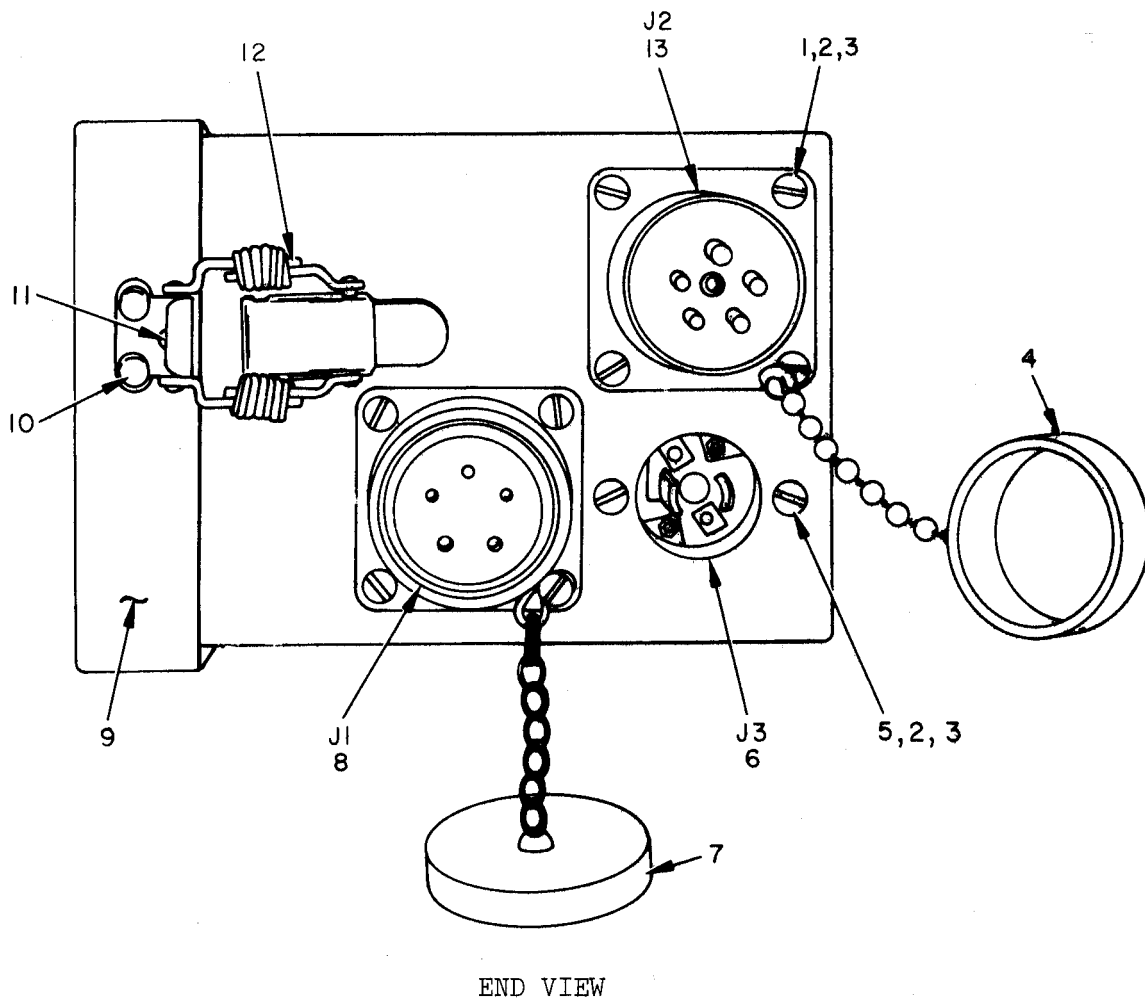


Figure 10. Test Set, Radiosonde TS-1348/GMM-1A, Rear View.

SECTION II

(1) ILLUSTRATION (A) FIG NO	(2) (B) ITEM NO	(3) SMR CODE	(4) NATIONAL STOCK NUMBER	(5) PART NUMBER	(6) FSCM	(7) DESCRIPTION	USABLE ON CODE	(8) QTY INC IN UNIT
10	1	PAFZZ	5905-00-845-5658	RW29V242	81349	RESISTOR, FIXED, WIRE WOUND		EA 1
10	2	PAOZZ	5920-00-280-8344	F02A250V1-2A	81349	FUSE, CARTRIDGE		EA 1
10	3	XDFZZ		SMA444361	80063	SWITCH, ROTARY		EA 1
10	4	PAFZZ	5905-00-638-3293	MS35223-30	96906	BOLT, MACHINE		EA 8
10	5	XDFZZ		3D5	17089	STANDOFF		EA 4
10	6	XDFZZ		SMB444370-1	80063	TERMINAL, STUD		EA 10
10	7	PAFZZ	5930-00-920-7189	SMA444362	80063	SWITCH, ROTARY		EA 1
10	8	XDFZZ		SMA444363	80063	SWITCH, ROTARY		EA 1
10	9	PAFZZ	5310-00-045-4007	MS35338-41	96906	WASHER, LOCK		EA 11
10	10	PAFZZ	5961-00-828-9184	JAN1N253	81349	SEMICONDUCTOR DEVICE, DIODE		EA 1
10	11	XDFZZ		SMB444370	80063	TERMINAL BOARD ASSEMBLY		EA 1
10	12	PAFZZ	5905-00-252-1953	RC42GF100J	81349	RESISTOR, FIXED, COMPOSITION		EA 1
10	13	PAFZZ	5905-00-279-3416	RC42GF330J	81349	RESISTOR, FIXED, COMPOSITION		EA 3
10	14	PAFZZ	5905-00-279-2595	RC42GF120J	81349	RESISTOR, FIXED, COMPOSITION		EA 1
10	15	XDFZZ		SMB444371	80063	BOARD, TERMINAL		EA 1
10	16	XDFZZ		RW29G102	81349	RESISTOR, FIXED, WIRE WOUND		EA 1
10	17	PAFZZ	5310-00-934-9747	MS35649-262	96906	NUT, HEXAGON		EA 3
10	18	PAFZZ	5310-00-082-1404	MS27183-6	96906	WASHER, FLAT		EA 3
10	19	PAFZZ	5310-00-345-0990	2153	83330	WASHER		EA 6
10	19A	PAFZZ	5310-00-045-4007	MS35338-41	96906	WASHER, LOCK		EA 10
10	20	PAFZZ	5305-00-840-0210	23AN515-6R36	80045	SCREW		EA 4
10	21	XDFZZ		RW29G161	81349	RESISTOR, FIXED, WIRE WOUND		EA 1
10	22	PAFZZ	6625-00-906-7959	SMD444352-4	80063	METER		EA 1
10	23	PAFFF	6625-00-906-7962	SMD444352-3	80063	METER		EA 1
10	24	PAFFF	6625-00-906-7961	SMD444352-2	80063	METER		EA 1
10	25	PAFFF	6625-00-906-7960	SMD444352-1	80063	METER		EA 1
10	26	XDOFF		SMB444364	80063	TERMINAL BOARD ASSEMBLY		EA 1
10	27	PAFZZ	5905-00-552-3826	RV4SAYS101A	81349	RESISTOR, VARIABLE		EA 2
10	28	PAFZZ	5905-00-581-0447	RV4SAYS102A	81349	RESISTOR, VARIABLE		EA 1
10	29	PAOZZ	5920-00-232-3675	F01A250V1-16A	96906	FUSE, CARTRIDGE		EA 1
10	30	PAFZZ	5920-00-284-7834	HJM	71400	FUSEHOLDER		EA 1
10	31	PAOZZ	5920-00-504-8634	F02B250V1-4A	81349	FUSE, CARTRIDGE		EA 1
10	32	PAFZZ	5920-00-280-4156	HKPHBL	71400	FUSEHOLDER		EA 2



ELOTHOII

Figure 11. Test Set, Radiosonde TS-1348/GMM-1A, Bottom View.

SECTION II

(1) ILLUSTRATION (A) FIG NO	(2) (B) ITEM NO	(3) SMR CODE	(4) NATIONAL STOCK NUMBER	(5) PART NUMBER	(6) DESCRIPTION FSCM	(7) USABLE ON CODE U/M	(8) QTY INC IN UNIT
11	1	PAFZZ	5305-00-984-4989	MS35206-229	96906 SCREW,MACHINE	EA	8
11	2	PAFZZ	5310-00-045-4007	MS35338-41	96906 WASHER, LOCK	EA	10
11	3	PAFZZ	5310-00-934-9747	MS35649-62	96906 NUT, HEXAGON	EA	10
11	4	PAOZZ	5935-00-578-2742	MS25043-24C	96906 CAP AND CHAIN	EA	1
11	5	XDFZZ		MS35221-28	96906 SCREW,MACHINE	EA	2
11	6	PAFZZ	5935-00-644-6750	7467	74545 CONNECTOR, RECEPTACLE	EA	1
11	7	PAOZZ	5935-00-937-3042	SMC444374	80063 CAP AND CHAIN	EA	1
11	8	XDFZZ		MS3102A24-17S	96906 CONNECTOR, RECEPTACLE	EA	1
11	9	XDFZZ		SMD444365	80063 COVER ASSEMBLY	EA	1
11	10	XDFZZ		MS20618-4P3	80063 RIVET, SOLID	EA	8
11	11	PAFZZ	5340-00-205-5159	SCD20648	80063 CATCH	EA	2
11	12	XDFZZ	5340-00-860-1088	SCD20650-30	80063 STRIKE, CATCH	EA	2
11	13	PAFZZ	6625-00-971-6214	SMB444358	80063 CONNECTOR ASSEMBLY	EA	1
11	14	XDFZZ		SMB444385	80063 BRACKET	EA	1
11	15	XDFZZ		SMB444369	80063 BRACKET	EA	1
11	16	PAFZZ	5310-00-639-7599	68NC1-82	72962 NUT, CLINCH	EA	14
11	17	PAFZZ	5305-00-638-3305	MS35223-44	96906 SCREW	EA	18
11	18	XDFZZ		SMB444356	80063 BRACKET	EA	1
11	19	XDFZZ		SMB444379	80063 GASKET	EA	1
11	20	PAFZZ	5310-00-045-3299	MS35338-42	96906 WASHER, LOCK	EA	8
11	21	XDFZZ		MS35649-82	96906 NUT, HEXAGON	EA	8
11	22	PAFZZ	6625-00-914-6066	SMC444357	80063 CONVERTER	EA	1

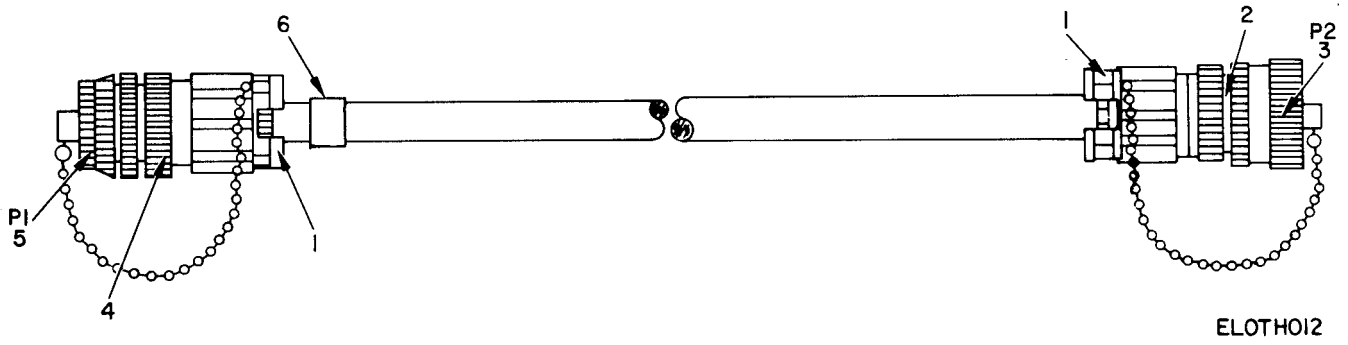


Figure 12. Cable Assembly CX-10470/GMM-1A.

SECTION II

(1)	(2)	(3)	(4)	(5)	(6)	(7)	(8)
ILLUSTRATION						QTY	
(A)	(B)	NATIONAL			DESCRIPTION	INC	
FIG	ITEM	SMR	STOCK	PART		IN	
NO	NO	CODE	NUMBER	NUMBER	FSCM	USABLE ON CODE	U/M UNIT
GROUP 07 CABLE ASSEMBLY CX-10470/GMM-1A							
12	1	PAHZZ	5365-00-141-6944	MS39056-4	96906 BUSHING, SLEEVE		EA 2
12	2	PAHZZ	5365-00-663-2125	MS39056-5	96906 BUSHING, SLEEVE		EA 2
12	3	PAHZZ	6625-00-971-6218	SMB444359	80063 CONNECTOR, PLUG		EA 1
12	4	XDHZZ		AN3057-16A	96906 CLAMP, CABLE		EA 2
12	5	PAHZZ	5935-00-201-8376	MS3106A24-17P	96906 CONNECTOR, PLUG		EA 1
12	6	XDHZZ		SCB34065	80063 BAND, IDENTIFICATION		EA 1

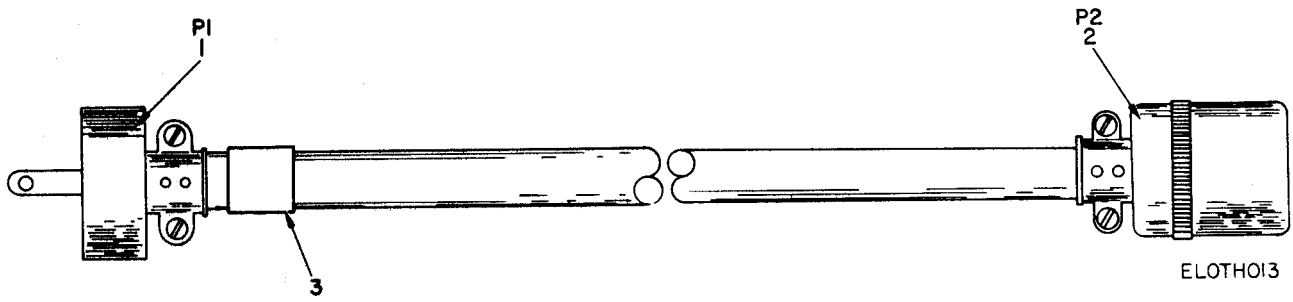


Figure 13. Cable Assembly CX-10469/U (AN/GMM-1A).

SECTION II

(1)	(2)	(3)	(4)	(5)	(6)	(7)	(8)	
ILLUSTRATION							QTY	
(A)	(B)	NATIONAL			DESCRIPTION		INC	
FIG	ITEM	SMR	STOCK	PART			IN	
NO	NO	CODE	NUMBER	NUMBER	FSCM	USABLE ON CODE	U/M	UNIT
GROUP 08 CABLE ASSEMBLY CX-10469/U (AN/GMM-1A)								
13	1	PAHZZ	5935-00-929-4864	WC596C42	81348	CONNECTOR, PLUG	EA	1
13	2	PAHZZ	5935-00-259-9643	7429	74545	CONNECTOR, RECEPTACLE	EA	1
13	3	XDHZZ		SCA21825-3B	80063	BAND, IDENTIFICATION	EA	1

SECTION IV TM11-6660-219-34P
 NATIONAL STOCK NUMBER AND PART NUMBER INDEX
 NOTE: LATEST NATIONAL STOCK NUMBER AND PART NUMBER ASSIGNMENTS ARE INCLUDED AT END OF INDEX

STOCK NUMBER	FIGURE NO	ITEM NO	STOCK NUMBER	FIGURE NO	ITEM NO
5310-00-045-3299	11	20	6660-00-355-8769	7	2
5310-00-045-4007	10	9	5995-00-356-0202	1	9
5310-00-045-4007	11	2	6660-00-356-4908	4	1
			7610-00-408-4818	1	4
5310-00-082-1404	10	18	5920-00-474-5743	5	8
5365-00-141-6944	12	1			
5935-00-149-3089	5	13	5920-00-504-8634	10	31
5935-00-149-4013	3	7	6660-00-527-8392	1	16
6240-00-155-7949	5	7	5310-00-543-2410	9	13
6240-00-155-7949	4	14			
5355-00-160-5910	9	9	5905-00-552-3826	10	27
			5355-00-556-0151	9	11
			5935-00-578-2742	11	4
			5905-00-581-0447	10	28
5325-00-174-5317	4	13			
6210-00-186-9042	5	6			
5935-00-201-8191	4	2	5305-00-638-3305	11	17
5935-00-201-8376	12	5	5305-00-638-3838	9	12
5310-00-208-2794	1	3	5310-00-639-7599	11	16
			5935-00-642-4039	1	7
			5935-00-644-6750	11	6
			5935-00-655-1514	7	4
5340-00-222-8562	1	8	5930-00-655-1575	7	3
6660-00-223-5084	1	13	5365-00-663-2125	12	2
5930-00-224-5559	7	1	5930-00-669-9958	5	3
5930-00-224-5559	7	1	5305-00-702-7578	6	1
6210-00-228-6027	5	5	5961-00-828-9184	10	10
5920-00-232-3675	10	29	5935-00-835-0962	3	5
5935-00-246-4447	3	1	5305-00-840-0210	10	20
5905-00-252-1953	10	12			
			6625-00-906-7959	10	22
5935-00-257-8680	6	2	6625-00-906-7960	10	25
5945-00-257-8748	4	5	6625-00-906-7961	10	24
5935-00-259-9643	13	2	6625-00-906-7962	10	23
5325-00-263-6632	5	10	5305-00-913-7334	1	2
9390-00-264-6158	8	2	6625-00-914-6066	11	22
6660-00-265-6329	1	10			
4140-00-269-7933	4	11	5310-00-933-7872	1	17
5905-00-279-2595	10	14	5310-00-933-7972	1	18
			5310-00-934-9739	9	14
5935-00-280-2822	3	2	5310-00-934-9747	2	4
5920-00-280-8344	10	2	5310-00-934-9747	10	17
5940-00-283-5386	4	9	5310-00-934-9747	11	3
6250-00-283-9741	5	4	6660-00-936-5437	5	11
6145-00-283-9635	BULK		5935-00-937-3042	11	7
5920-00-284-7834	10	30	6625-00-937-6794	1	6
6740-00-291-5834	4	12	6625-00-971-6213	9	5
5935-00-295-5351	3	6	6625-00-971-6214	11	13
5950-00-295-7545	5	1	6625-00-971-6218	12	3
6685-00-309-5693	4	6	5305-00-984-4989	11	1
5310-00-345-0990	10	19			

PART NUMBER	FSCM	FIGURE NO	ITEM NO	PART NUMBER	FSCM	FIGURE NO	ITEM NO
AN3057-10A	96906	3	3				
AN3057-16A	96906	12	4				
				MS20618-4P3	80063	11	10
AN931-3-5	88044	4	13	MS25043-24C	96906	2	5
AN931-4-7	88044	5	10	MS25043-24C	96906	11	4
A7754-1	51915	4	5	MS27183-6	96906	2	3
				MS27183-6	96906	10	18
				MS3102A24-17S	96906	11	8
				MS3106A24-17P	96906	12	5
				MS35058-22	96906	7	4
CX10469U	80058	1	12	MS35059-22	96906	7	3
CX10470GMM1	80058	1	11	MS35221-28	96906	11	5
F01A250V1-16A	81349	10	29	MS35221-35	96906	2	1
F02A250V1-2A	81349	10	2	MS35223-19	96906	9	12
F02G3R00A	81349	5	8	MS35223-30	96906	10	4
HJM	71400	10	30	MS35223-44	96906	11	17
HKPHBL	71400	5	9	MS35338-40	96906	9	13
HKPHBL	71400	10	32	MS35338-41	96906	10	9
LM27	80063	5	7	MS35338-41	96906	11	2
LM27	80063	4	14	MS35338-42	96906	11	20
MEC10092	74082	5	1	MS35649-42	96906	9	14
ML224	81349	1	13				

TM11-6660-219-34P
SECTION IV
NATIONAL STOCK NUMBER AND PART NUMBER INDEX

PART NUMBER	FSCM	FIG NO	ITEM NO	PART NUMBER	FSCM	FIG NO	ITEM NO
MS35649-62	96906	11	3	SMB444370	80063	10	11
MS35649-82	96906	11	21	SMB444370-1	80063	10	6
MS39056-4	96906	12	1	SMB444371	80063	10	15
MS39056-5	96906	12	2	SMB444379	80063	11	19
MS90120-2B01	96906	9	9	SMB444385	80063	11	14
MS91528-1D2B	96906	9	11	SMB444386	80063	1	15
RC42GF100J	81349	10	12	SMC136996	80063	5	11
RC42GF120J	81349	10	14	SMC444352	80063	9	10
RC42GF330J	81349	10	13	SMC444355	80063	9	5
				SMC444355-1	80063	9	3
				SMC444355-2	80063	9	4
				SMC444357	80063	11	22
RW29G102	81349	10	16	SMC444360	80063	9	8
RW29G161	81349	10	21	SMC444368	80063	1	6
				SMC444374	80063	11	7
SCA21825-3B	80063	13	3	SMC444380	80063	9	1
SCB21274	80063	4	6	SMD444351	80063	9	6
SCB21275	80063	2	7				
SCB21276	80063	2	8	SMD444352-4	80063	10	22
SCB21277-16	80063	4	11	SMD444353	80063	9	7
SCB21281	80063	4	3	SMD444353-1	80063	9	2
SCB21284	80063	4	8	SMD444365	80063	11	9
SCB21310	80063	4	1	SS58310	61864	1	3
SCB21352	80063	7	2	TS1348GMM1A	80058	1	19
SCB21403	80063	1	10	WC596C42	81348	13	1
SCB34065	80063	12	6	10-40450-24	77820	2	6
SCB87974	80063	4	7	173C	37942	5	3
SCB93722	80063	1	17	2A44	99971	4	10
SCC16495	80063	4	9	2153	83330	10	19
SCC176461	80063	7	1	235	82187	1	4
SCC176461	80063	7	1	25CSP	72765	5	5
SCC76527-5	80063	1	14	2558	70485	1	5
SCDL20624	80063	8	1	3D5	17089	10	5
SCD20648	80063	11	11	32148-PH-51	80063	1	20
SCD20650-30	80063	11	12				
				6X5-8	45722	1	18
SCD21277-3	80063	4	4				
				706	72619	5	4
SCD21343	80063	1	1				
SCD21343-8	80063	5	2	7429	74545	13	2
SCD21356	80063	1	9	7445	72825	4	2
				7467	74545	11	6
				7506	74545	3	6
SMA444361	80063	10	3	7507	74545	3	7
SMA444362	80063	10	7	7510	59519	1	7
SMA444363	80063	10	8	7523	74545	5	13
SMB444356	80063	11	18	810B432	72619	5	6
SMB444358	80063	11	13				
SMB444359	80063	12	3	97-5105A-18-8P	02660	6	2
SMB444364	80063	10	26	9760-18P	02660	3	1
SMB444369	80063	11	15				

LATEST NATIONAL STOCK NUMBER ASSIGNMENTS

STOCK NUMBER	FIGURE NO.	ITEM NO.
5305-00-043-6509	2	1
6660-00-356-5150	2	7
6660-00-356-5151	2	8
5330-00-432-4734	2	6
5935-00-500-5008	3	4
5935-00-578-2742	2	5
5935-00-809-0786	3	3
5905-00-845-5658	10	1
5340-00-860-1088	11	12
5910-00-880-0380	6	3
5930-00-920-7189	10	7

LATEST PART NUMBER ASSIGNMENTS

PART NUMBER	FSCM	FIG. NO.	ITEM NO.
CP72B1EF405K1	81349	6	3
JAN1N253	81349	10	10
MS25043-18D	96906	3	4
MS3057-10A	96906	3	3
MS3101E18-8S	81349	3	5
MS3102E18-8SC	96906	5	12
MS3106A18-8P	81349	3	2
MS35338-41	96906	2	2
MS35338-41	96906	10	19A
MS35649-262	96906	2	4
MS35649-262	96906	10	17
MS90079-26	96906	10	31
RV4SAYS101A	81349	10	27
RV4SAYS102A	81349	10	28
RW29V242	81349	10	1
SEELSCREWR10-32X5-8	97539	6	1
SEELSCREWS1032X7-8	97539	1	2
SMD444352-1	80063	10	25
SMD444352-2	80063	10	24
SMD444352-3	80063	10	23
23AN515-6R36	80045	10	20
68NC1-82	72962	11	16

TM11-6660-219-34P
SECTION IV
NATIONAL STOCK NUMBER AND PART NUMBER INDEX

ADDITIONAL LATEST NATIONAL STOCK NUMBER ASSIGNMENTS

STOCK NUMBER	FIG NO	ITEM NO
5310-00-045-4007	10	19A
5340-00-205-5159	11	11
5905-00-279-3416	10	13
5920-00-280-4156	5	9
5920-00-280-4156	10	32
6740-00-291-5834	4	12
5935-00-577-0281	5	12
5305-00-638-3293	10	4
5935-00-929-4864	13	1

ADDITIONAL LATEST PART NUMBER ASSIGNMENTS

PART NUMBER	FSCM	FIG NO	ITEM NO
ANGMM1A	80058	1	16
CPC4	05690	1	8
F02B250V1-4A	81349	10	31
MS35206-229	96906	11	1
RR-T-646	81349	4	12
109	74393	8	2

RECOMMENDED CHANGES TO EQUIPMENT TECHNICAL MANUALS



SOMETHING WRONG WITH THIS MANUAL?

THEN... JOT DOWN THE DOPE ABOUT IT ON THIS FORM, TEAR IT OUT, FOLD IT AND DROP IT IN THE MAIL!

FROM: (YOUR UNIT'S COMPLETE ADDRESS)

Commander
Stateside Army Depot
ATTN: AMSTA-US
Stateside, N.J. 07703

DATE 10 July 1975

PUBLICATION NUMBER

TM 11-5840-340-12

DATE

23 Jan 74

TITLE

Radar Set AN/P-3-76

BE EXACT... PIN-POINT WHERE IT IS

IN THIS SPACE TELL WHAT IS WRONG AND WHAT SHOULD BE DONE ABOUT IT:

PAGE NO.	PARA-GRAPH	FIGURE NO.	TABLE NO.
----------	------------	------------	-----------

2-25	2-28		
------	------	--	--

Recommend that the installation antenna alignment procedure be changed throughout to specify a 2° IFF antenna lag rather than 1°.

REASON: Experience has shown that with only a 1° lag, the antenna servo system is too sensitive to wind gusting in excess of 25 knots, and has a tendency to rapidly accelerate and decelerate as it hunts, causing strain to the drive train. Hunting is minimized by adjusting the lag to 2° without degradation of operation.

3-10	3-3		
------	-----	--	--

3-1	Item 5, Functions column. Change "2 db" to "3db."
-----	---

REASON: The adjustment procedure for the TRANS POWER FAULT indicator calls for a 3 db (500 watts) adjustment to light the TRANS POWER FAULT indicator.

5-6	5-8		
-----	-----	--	--

Add new step f.1 to read, "Replace cover plate removed in step e.1, above."

REASON: To replace the cover plate.

FO3

Zone C 3. On J1-2, change "+24 VDC to "+5 VDC."

REASON: This is the output line of the 5 VDC power supply. + 24 VDC is the input voltage.

TYPED NAME, GRADE OR TITLE, AND TELEPHONE NUMBER

SSG I. M. DeSpirito 999-1776

SIGN HERE:

SSG I. M. DeSpirito

DA FORM 2028-2
1 AUG 74

P.S.--IF YOUR OUTFIT WANTS TO KNOW ABOUT YOUR MANUAL "FIND" MAKE A CARBON COPY OF THIS AND GIVE IT TO YOUR HEADQUARTERS.

HISA 1686-75

TEAR ALONG DOTTED LINE

RECOMMENDED CHANGES TO EQUIPMENT TECHNICAL MANUALS



SOMETHING WRONG WITH THIS MANUAL?

THEN... JOT DOWN THE DOPE ABOUT IT ON THIS FORM, TEAR IT OUT, FOLD IT AND DROP IT IN THE MAIL!

FROM: (YOUR UNIT'S COMPLETE ADDRESS)

DATE

PUBLICATION NUMBER

TM 11-6660-219-34P

DATE

13 Oct 78

TITLE RADIOSONDE BASELINE CHECK SETS AN/GMM-1 AND AN/GMM-1A

BE EXACT... PIN-POINT WHERE IT IS

IN THIS SPACE TELL WHAT IS WRONG AND WHAT SHOULD BE DONE ABOUT IT:

PAGE NO.	PARA-GRAPH	FIGURE NO.	TABLE NO.

TEAR ALONG DOTTED LINE

TYPED NAME, GRADE OR TITLE, AND TELEPHONE NUMBER

SIGN HERE:

DA FORM 2028-2
1 AUG 74

P.S.--IF YOUR OUTFIT WANTS TO KNOW ABOUT YOUR MANUAL "FIND," MAKE A CARBON COPY OF THIS AND GIVE IT TO YOUR HEADQUARTERS.

FILL IN YOUR
UNIT'S ADDRESS

FOLD BACK

DEPARTMENT OF THE ARMY

OFFICIAL BUSINESS
PENALTY FOR PRIVATE USE, \$300

POSTAGE AND FEES PAID
DEPARTMENT OF THE ARMY
DOD-314



Commander
US Army Communications and
Electronics Materiel Readiness Command
ATTN: DRSEL-ME-MQ
Fort Monmouth, New Jersey 07703

TEAR ALONG DOTTED LINE

FOLD BACK

RECOMMENDED CHANGES TO EQUIPMENT TECHNICAL MANUALS



THEN...JOT DOWN THE DOPE ABOUT IT ON THIS FORM, TEAR IT OUT, FOLD IT AND DROP IT IN THE MAIL!

SOMETHING WRONG WITH THIS MANUAL?

FROM: (YOUR UNIT'S COMPLETE ADDRESS)

DATE

PUBLICATION NUMBER

TM 11-6660-219-34P

DATE

13 Oct 78

TITLE

RADIOSONDE BASELINE CHECK SETS AN/GMM-1 AND AN/GMM-1A

BE EXACT...PIN-POINT WHERE IT IS

PAGE NO.

PARA-GRAPH

FIGURE NO.

TABLE NO.

IN THIS SPACE TELL WHAT IS WRONG AND WHAT SHOULD BE DONE ABOUT IT:

TEAR ALONG DOTTED LINE

TYPED NAME, GRADE OR TITLE, AND TELEPHONE NUMBER

SIGN HERE:

DA FORM 2028-2
1 AUG 74

P.S.--IF YOUR OUTFIT WANTS TO KNOW ABOUT YOUR MANUAL "FIND," MAKE A CARBON COPY OF THIS AND GIVE IT TO YOUR HEADQUARTERS.

FILL IN YOUR
UNIT'S ADDRESS

FOLD BACK

DEPARTMENT OF THE ARMY

OFFICIAL BUSINESS

PENALTY FOR PRIVATE USE, \$300

POSTAGE AND FEES PAID
DEPARTMENT OF THE ARMY
DOD-314



Commander
US Army Communications and
Electronics Materiel Readiness Command
ATTN: DRSEL-ME-MQ
Fort Monmouth, New Jersey 07703

TEAR ALONG DOTTED LINE

FOLD BACK

FILL IN YOUR
UNIT'S ADDRESS

FOLD BACK

DEPARTMENT OF THE ARMY

OFFICIAL BUSINESS

PENALTY FOR PRIVATE USE, \$300

POSTAGE AND FEES PAID
DEPARTMENT OF THE ARMY
DOD-314



Commander
US Army Communications and
Electronics Materiel Readiness Command
ATTN: DRSEL-ME-MQ
Fort Monmouth, New Jersey 07703

TEAR ALONG DOTTED LINE

FOLD BACK

By Order of the Secretary of the Army:

BERNARD W. ROGERS
General, United States Army
Chief of Staff

Official:

J. C. PENNINGTON
Brigadier General, United States Army
The Adjutant General

Distribution:

Active Army:

USAINSCOM (2)	(1 cy each, UNOINDC)
COE (1)	29-207 (2)
TSG (1)	29-610 (2)
USAARENBD (1)	6-100
DARCOM (1)	6-185
TRADOC (2)	6-200
OS Maj Comd (4)	6-201
TECOM (2)	6-300
USACC (4)	6-302
MDW (1)	6-525
Armies (2)	6-526
Corps (2)	6-575
USAREUR (10)	6-576
Svc Colleges (1)	6-700
USASIGS (5)	6-701
USAADS (2)	7
USAFAS (2)	7-100
USAARMS (2)	11-15
USAIS (2)	11-16
USAES (2)	11-35
USAICS (3)	11-36
MAAG (1)	11-38
USARMIS (1)	11-39
USAERDAA (1)	11-85
USAERDAW (1)	11-95
USAFABD (2)	11-117
DPG (2)	11-215
Fort Gillem (10)	11-225
Fort Gordon (10)	11-228
Ft Huachuca (10)	11-237
Fort Carson (5)	11-500 (AA-AC)
Ft Monmouth (HISA) (26)	17
Ft Richardson (CERCOM) (2)	17-100
Army Dep (1) except	29-134
LBAD (14)	29-136
SAAD (30)	37
TOAD (14)	37-100
SHAD (3)	39-51
USA Dep (1)	57
Sig Sec USA Dep (1)	67
Units org under fol TOE:	

NG: State AG (3)

USAR: None

For explanation of abbreviations used, see AR 310-50.

DEPARTMENT OF THE ARMY
US ARMY AG PUBLICATIONS CENTER
1655 WOODSON ROAD
ST. LOUIS, MISSOURI 63114

OFFICIAL BUSINESS
PENALTY FOR PRIVATE USE \$300

POSTAGE AND FEES PAID
DEPARTMENT OF THE ARMY
DOD 314

